



Universiteit
Leiden
The Netherlands



Entanglements

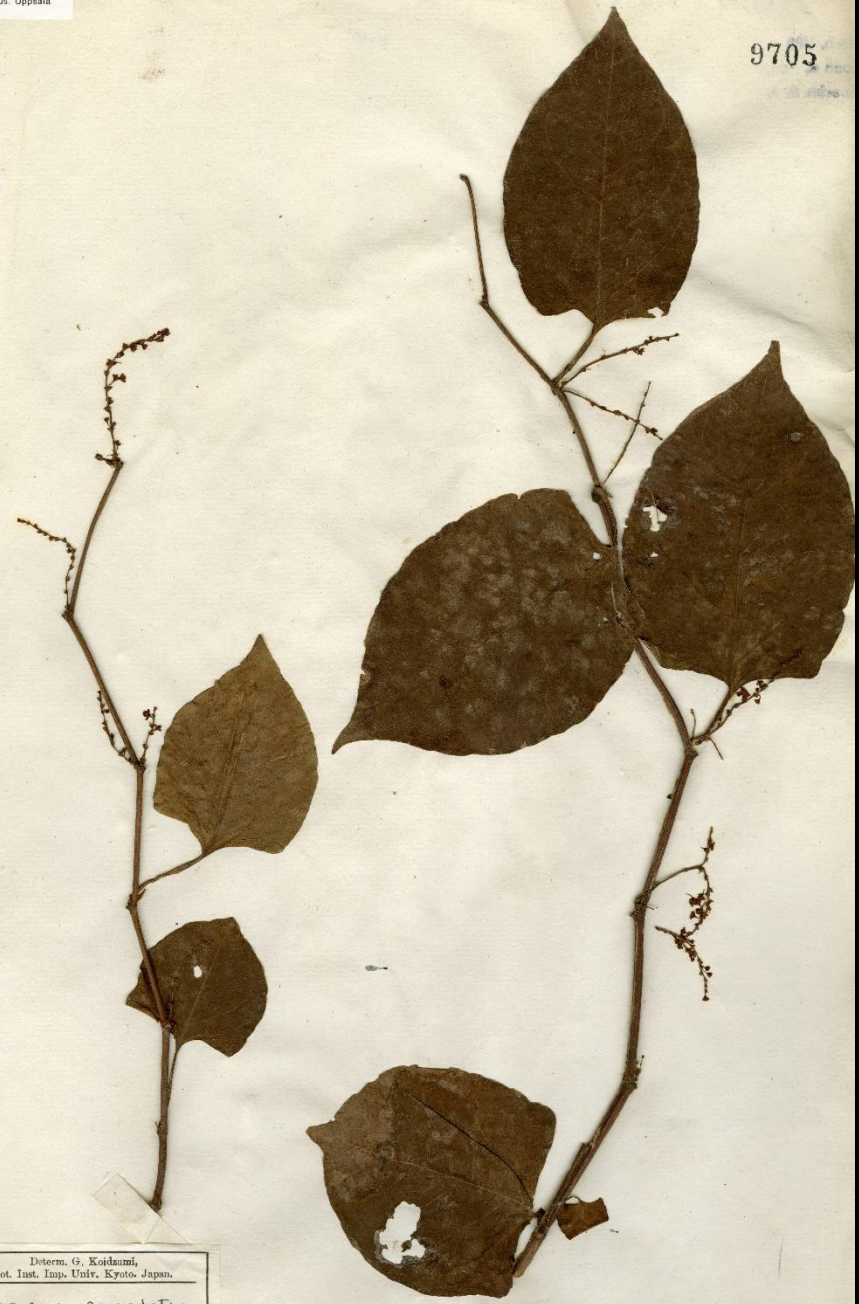
or, how knotweed came to be loved and hated

Norbert Peeters

Synonyms

- *Fallopia japonica*
- *Polygonum cuspidatum*
- *Polygonum sieboldii*
- *Reynoutria japonica*

9705

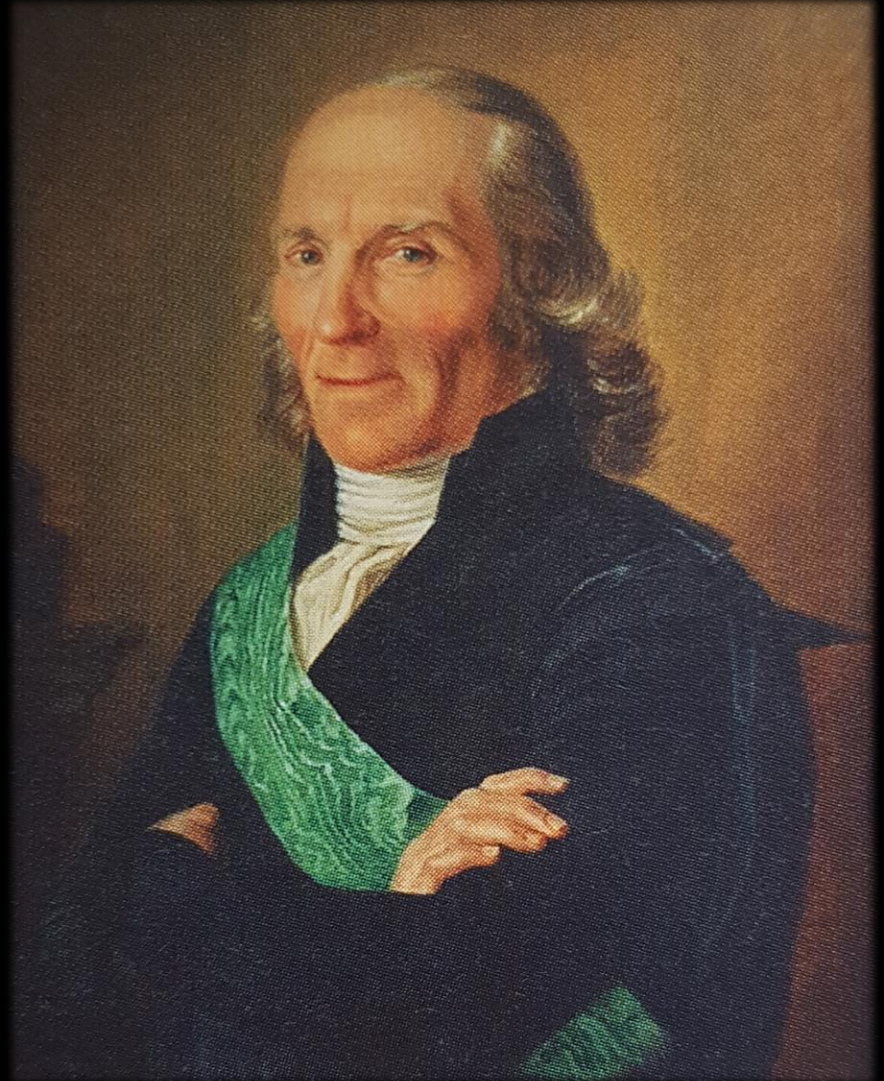


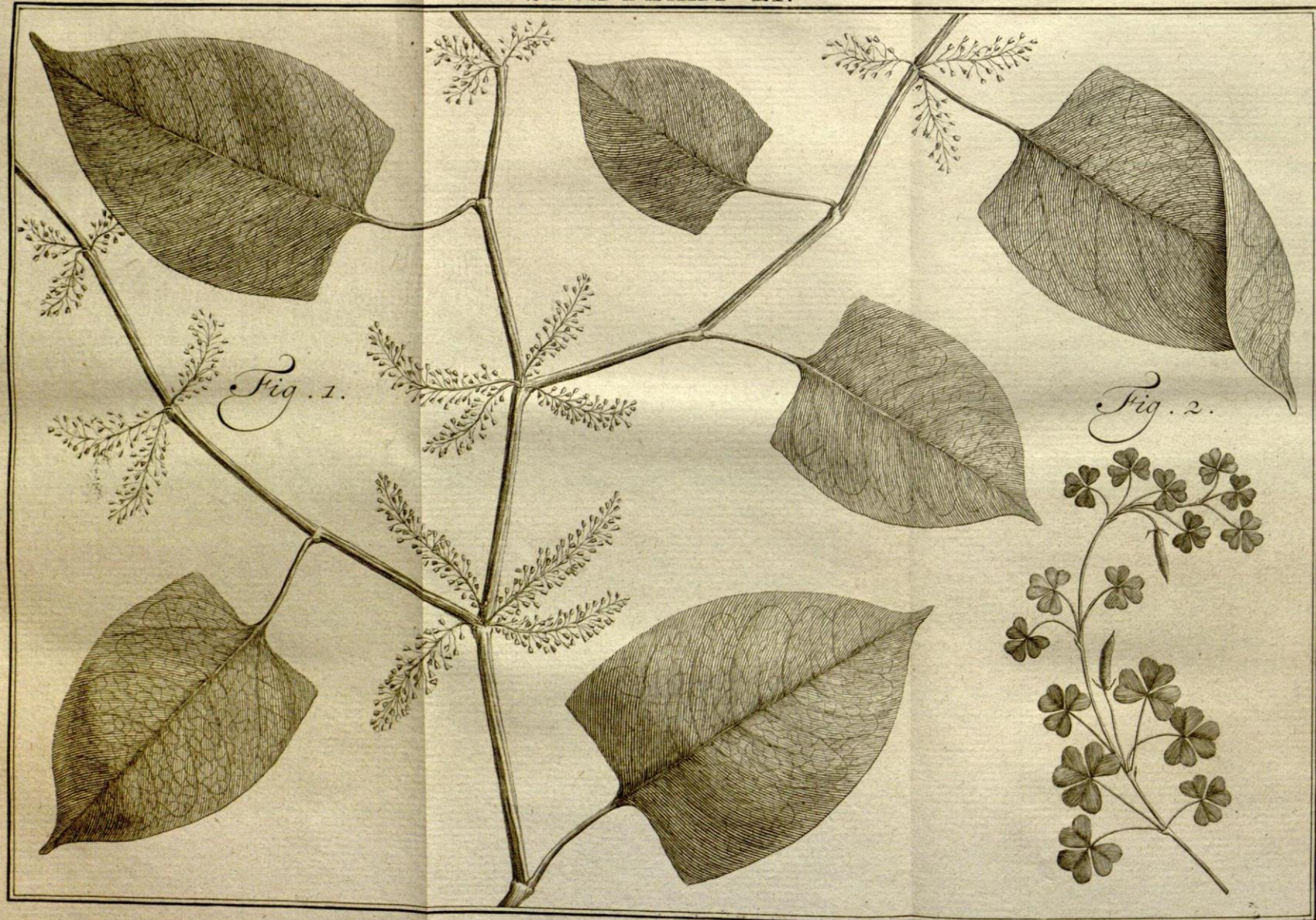
Determ. G. Koideami,
Bot. Inst. Imp. Univ. Kyoto Japan.
Polygonum cuspidatum
S. & Z.
Museo Anni 1943.

UPS neg. n. 591

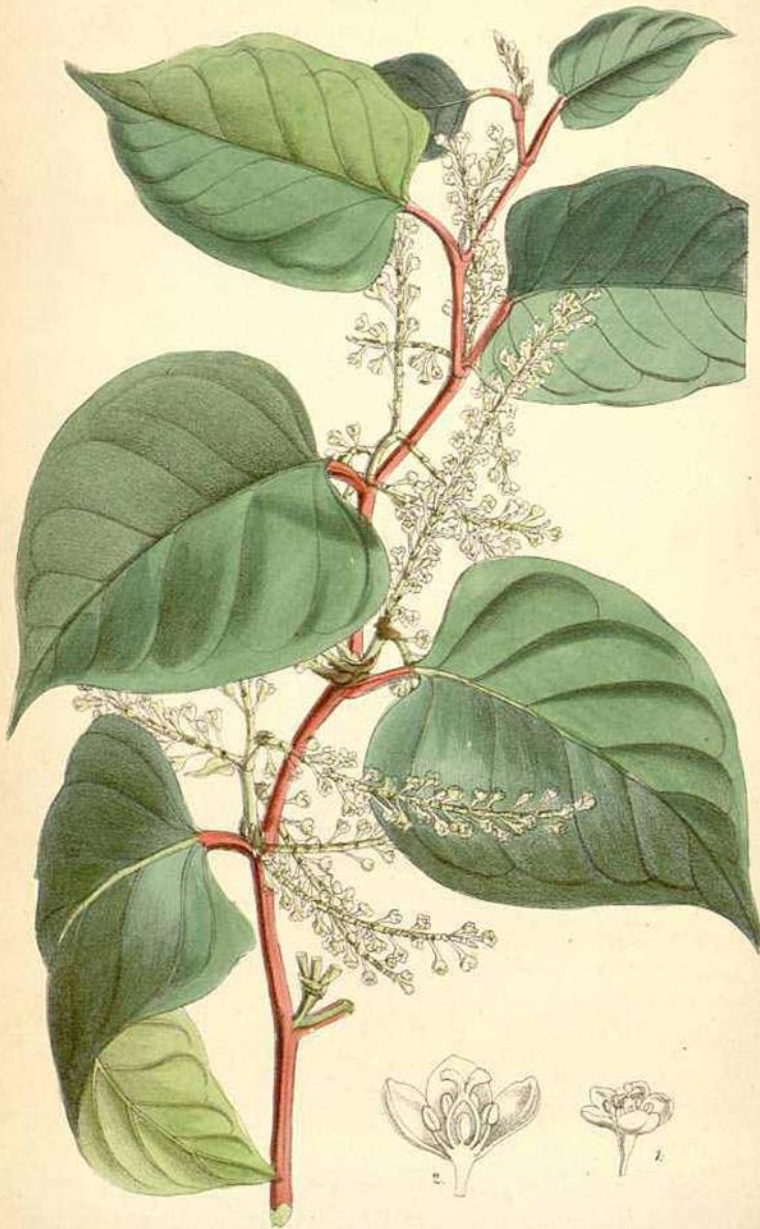
Polygonum multiflorum L.

Carl Peter Thunberg
(1743-1828)





Reynoutria japonica, Maarten Houttuyn, Natuurlyke Historie



A.B. del. J.N. Poir. lith.

Vincenz. Brocchi. Del. & Sculp.

L. Reeve & Co. London.



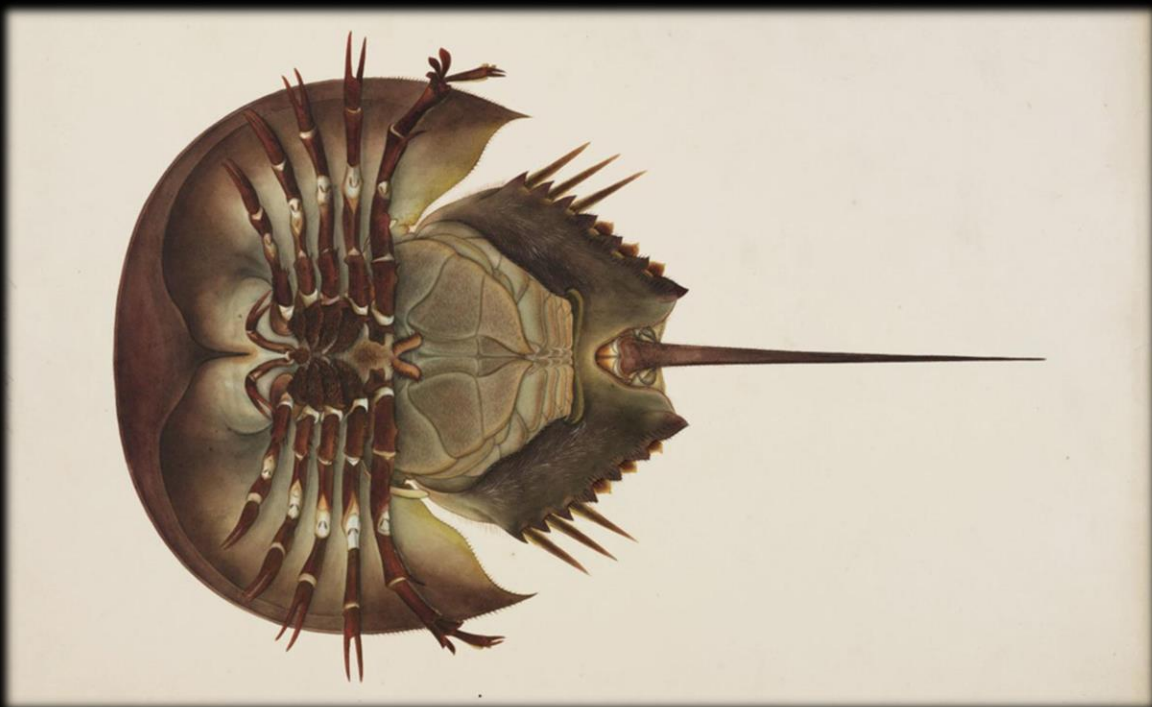
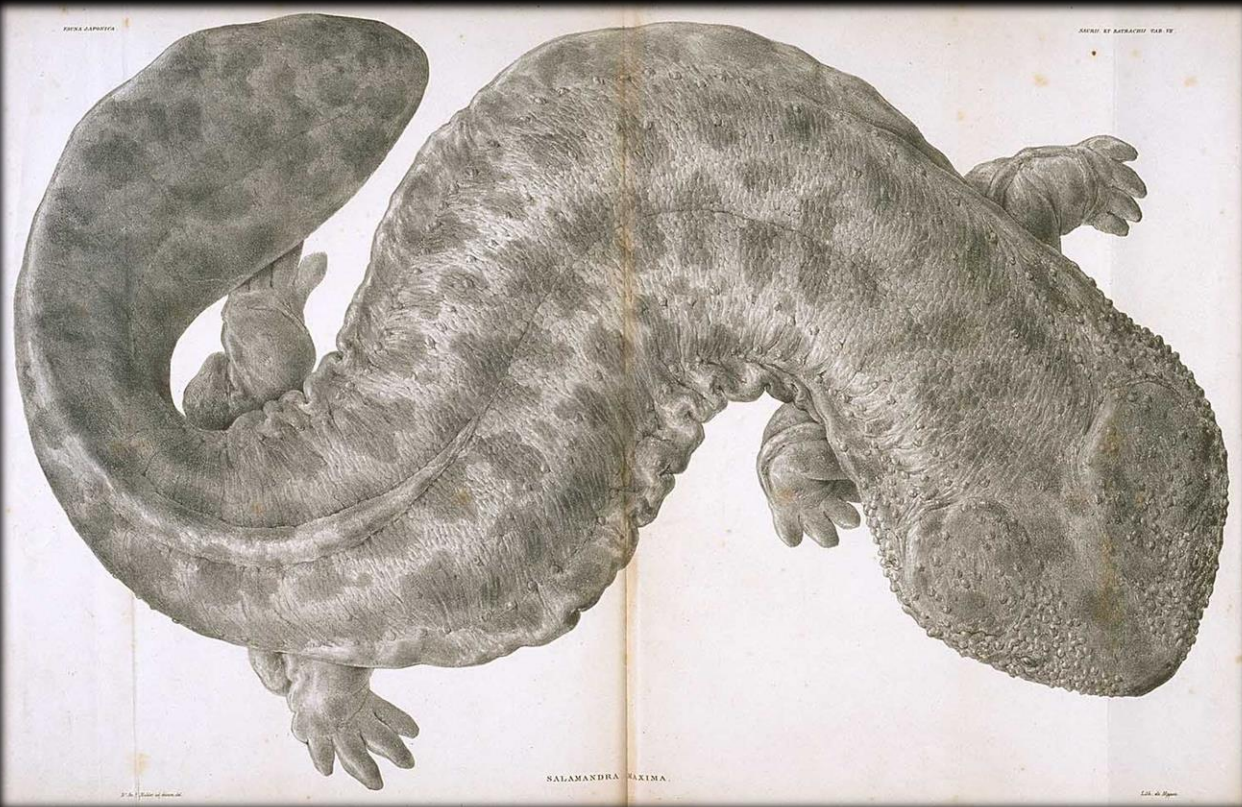
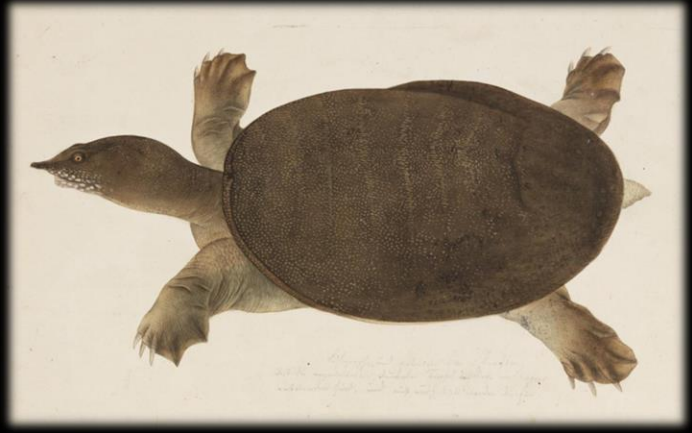
Philipp Franz von Siebold
(1796-1866)



Nagasaki bay



Deshima

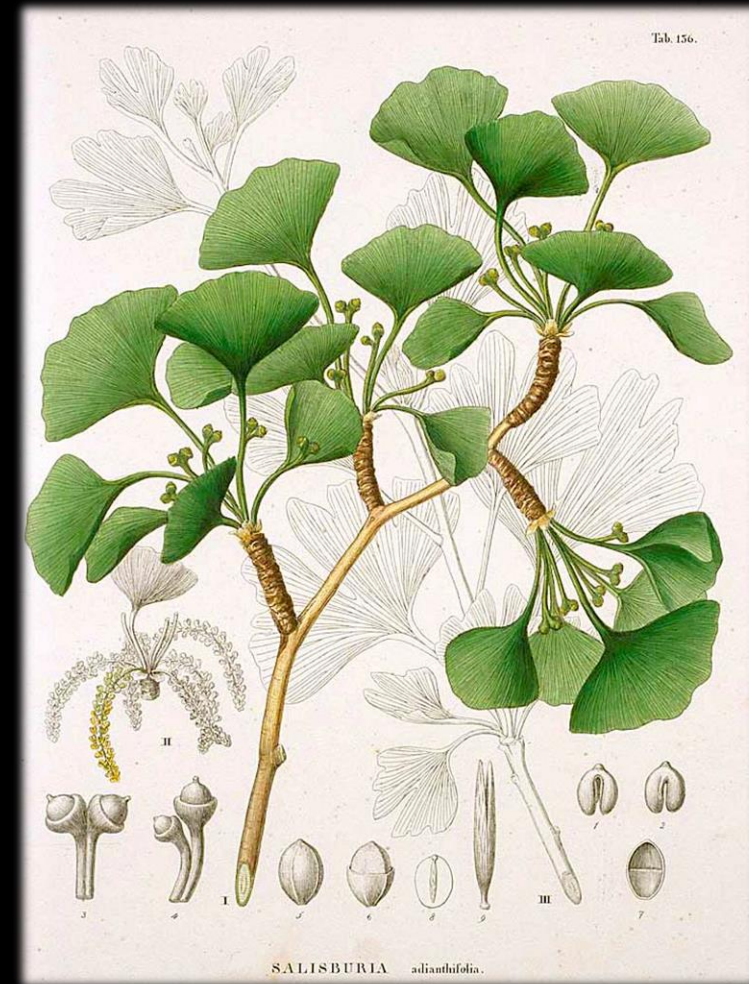
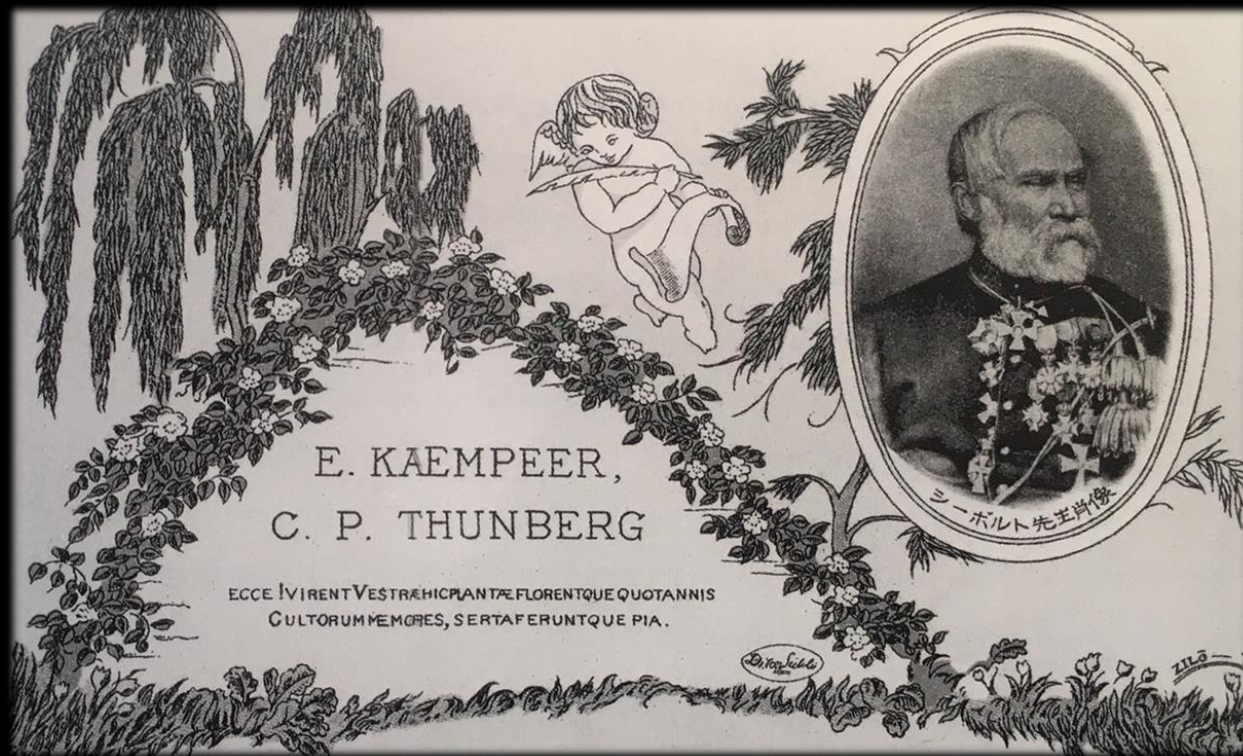


Japanese giant salamander
Andrias japonicus

Horse-shoe crab
Tachypleus tridentatus

Flora Japonica (1849)

With Joseph Gerhard Zuccarini (1797-1848)





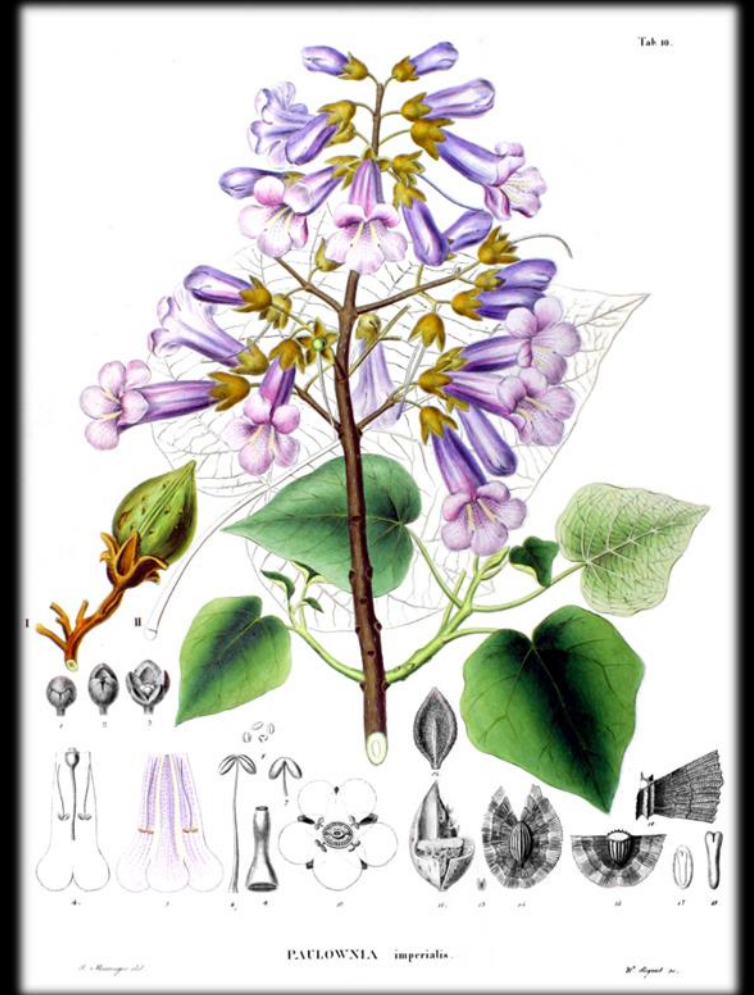
Jardin d'acclimatation
'Nippon'



Hortensia
Hydrangea macrophylla 'Otaksa'



Hosta
Hosta sieboldiana



Princess tree
(Paulownia tomentosa)



Wisteria
(*Wisteria sinensis*)



... one of the most important introductions from Japan, a perennial ornamental plant (...) useful in creating bushes, protecting young plantations and strengthening sandy hills and dunes.

Catalogue raisonné et prix-courant des plantes et graines du Japon et de la Chine (1863)



Philipp Franz von Siebold
(1796-1866)



The Great Japan Knotweed (*Polygonum cuspidatum*).
(Showing the plant in flower.)

***Polygonum cuspidatum*.**—If, instead of the formal character of much of our gardening, plants of bold types similar to the above were introduced along the sides of woodland walks and shrubbery borders, how much more enjoyable such places would be, as at almost every step there would be something fresh to attract notice and gratify the eye, instead of which such parts are generally bare, or given up to weeds and monotonous rubbish.

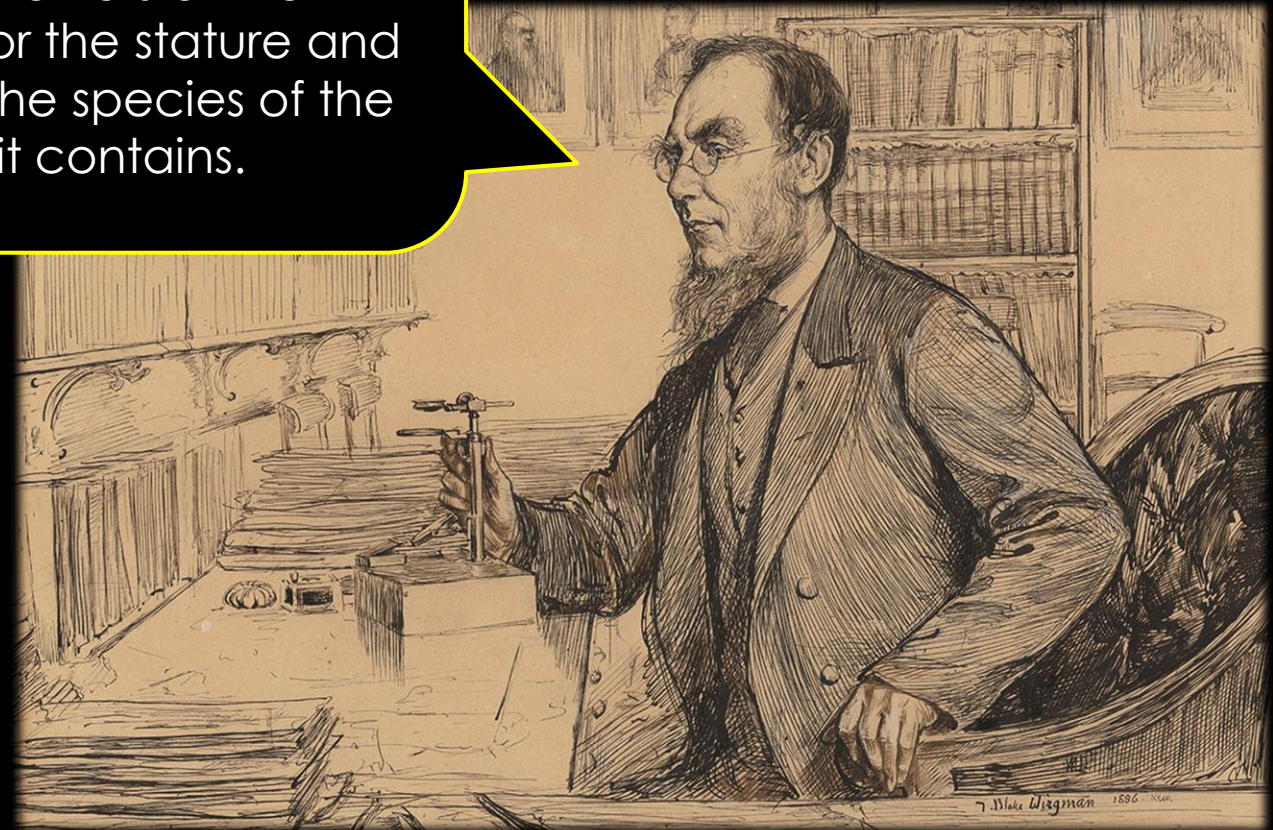
The Wild Garden (1870)

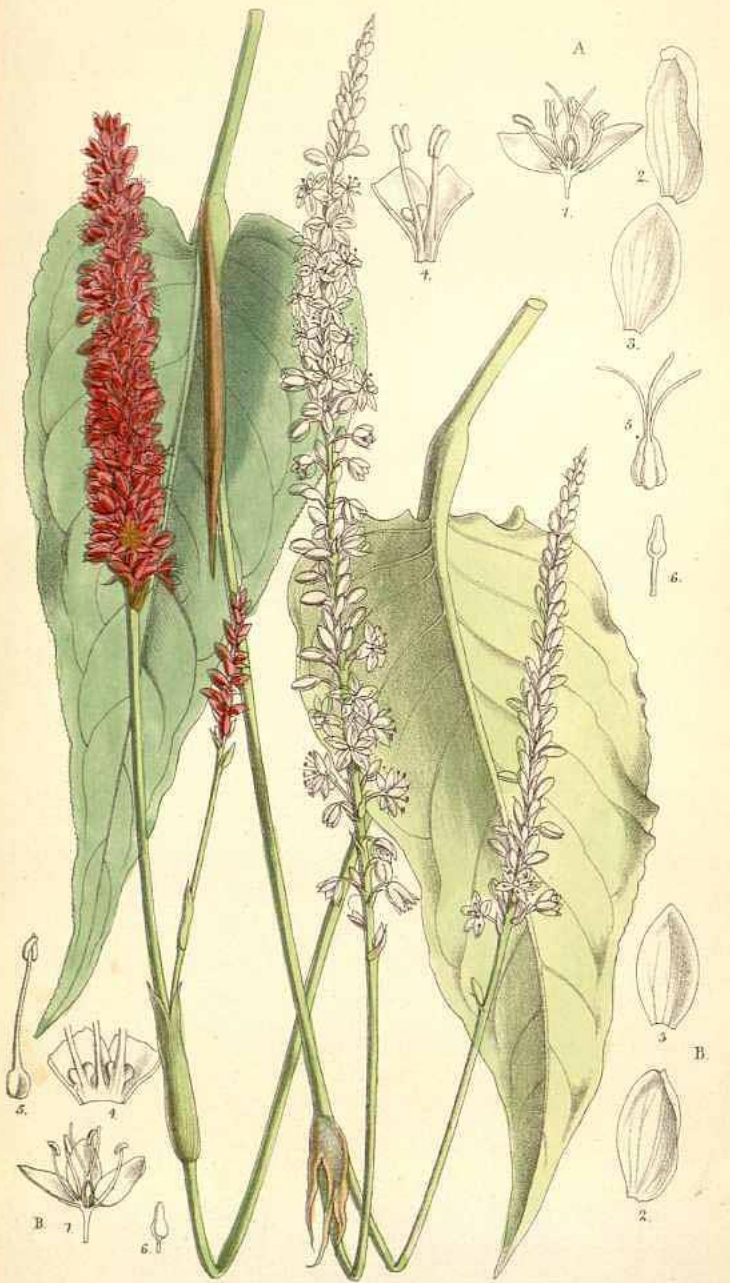


William Robinson
(1838-1935)

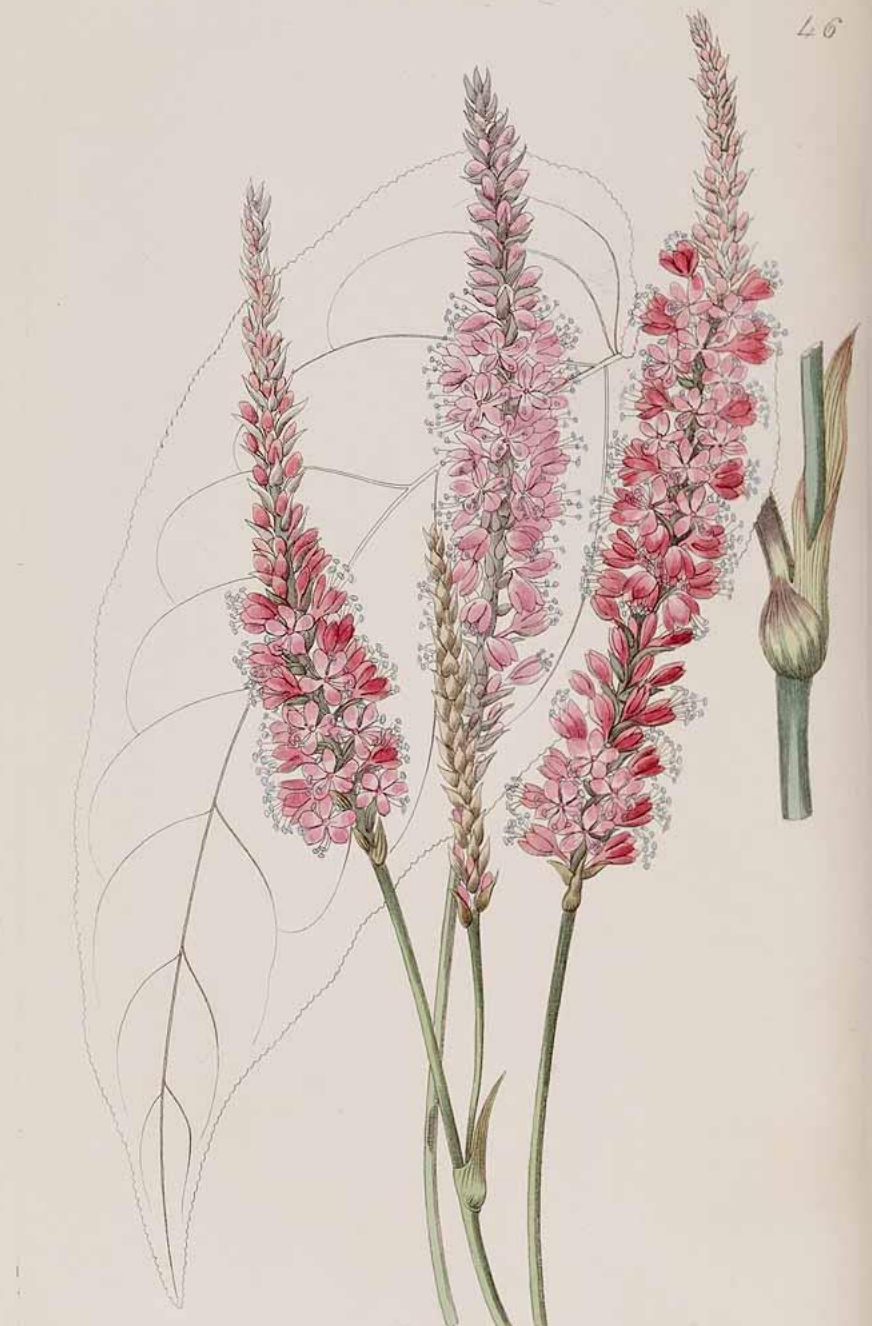
The Himalaya Mountains are as remarkable in a botanical 'point of view for the beauty of the colouring of the flowers of their *Polygonums*, as Japan is for the stature and noble foliage of some of the species of the same genus which it contains.

Joseph Dalton Hooker
(1817-1911)





AE del. J.N. Fitch, lith. L. Reeve & Co. London. Vincent, Brothers Day & Son Imp.

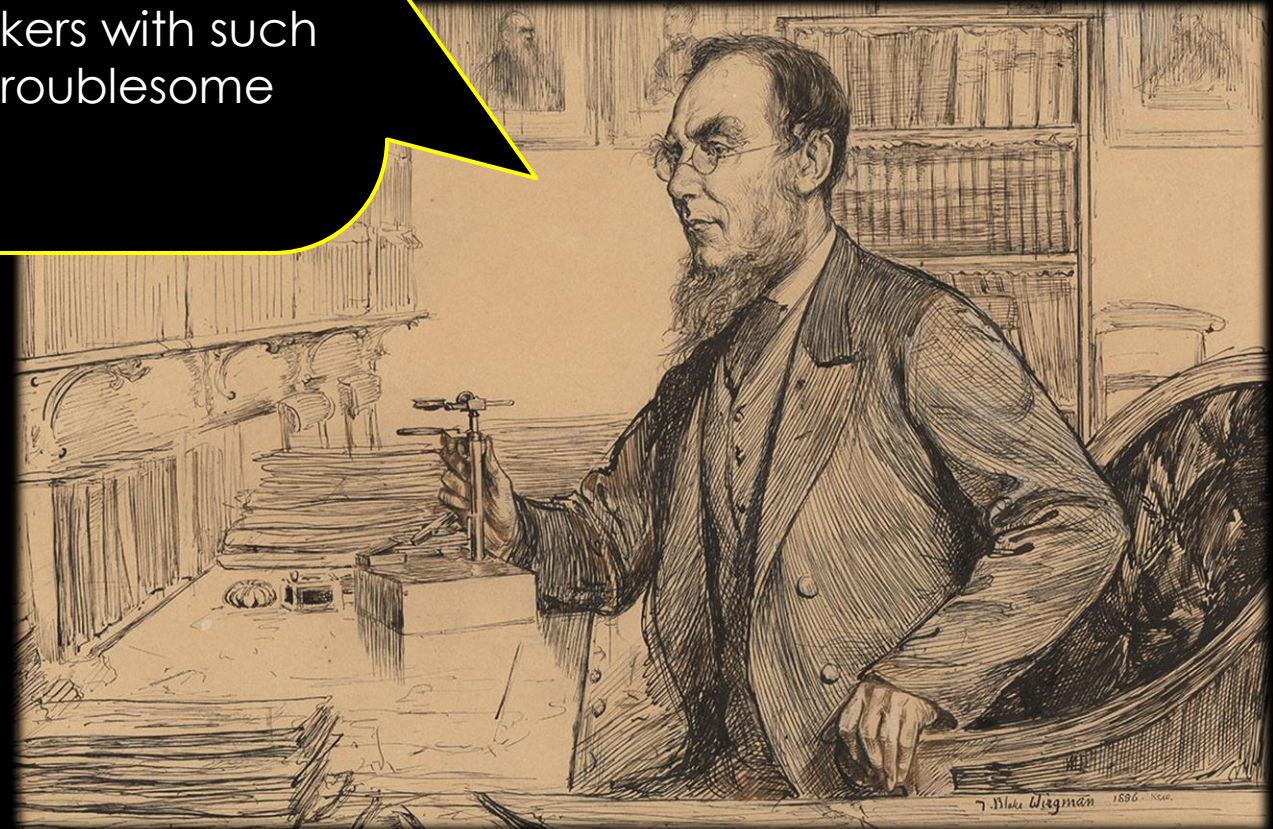


Miss Drake del. Painted by J. Ridgway 150, Piccadilly Aug 7. 1839. J. Boardman sc.

Polygonum amplexicaule D. Don
A. Barnhard, Curtis, W., *Botanical Magazine*, vol. 106 (1880)

The Japanese and N. Chinese *Polygonums* of the section *Pleuropterus*, are amongst the most ornamental herbaceous plants of the garden; some of them, as *P. cuspidatum* and *Sachaliense*, throwing up, in the summer time, branches so numerous, long (often eight feet high), and strong, as to become truly bushes. They are of graceful habit, easily grown, perfectly hardy, and increase underground suckers with such rapidity that the larger sorts are apt to prove troublesome monopolists of the soil.

Joseph Dalton Hooker
(1817-1911)



6476.

Polygonum compactum Hook.f.

A. Barnhard, Curtis, W., Botanical Magazine, vol. 106
(1880)

What growth, what flowering, what
development in a few days!

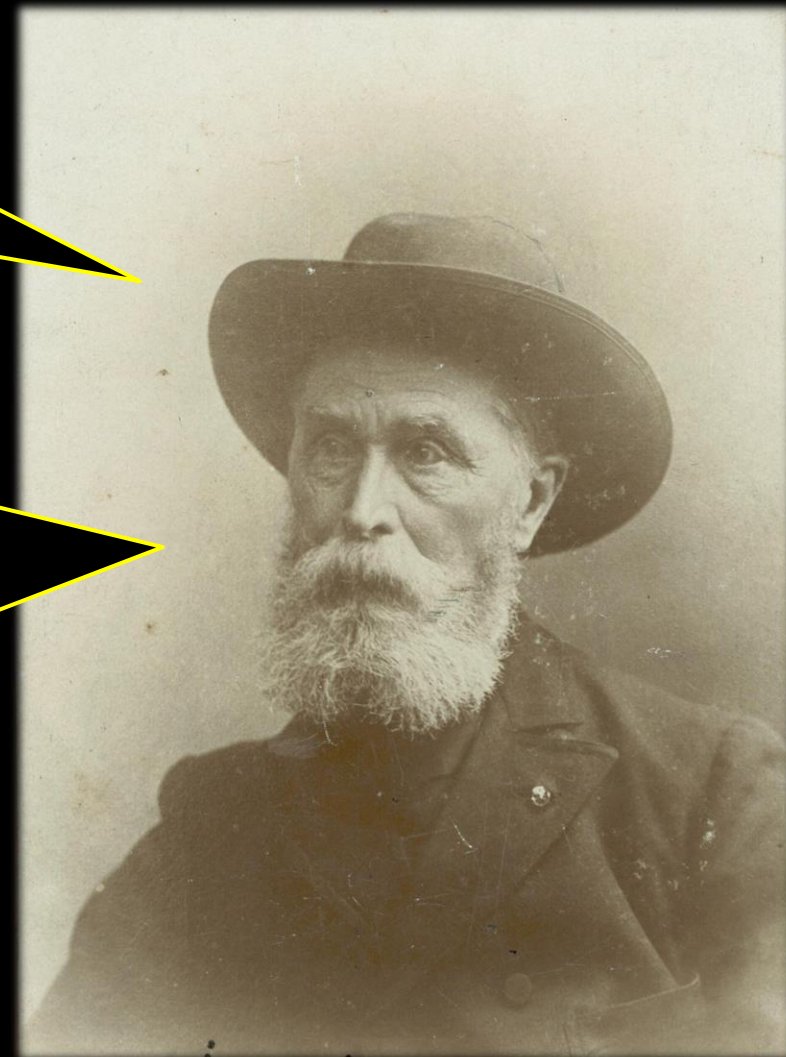
The *Polygonum sachalinense*, as it were a
counterpart of the one just mentioned, even
more stout in appearance in the summer, and
which takes hold of the soil in its surroundings in
a much more brutal way.



A.B. del. J.M. Hild. Lith.

Vincent Brooks Day & Son Imp.

I. Reeve & Co. London.



Heinrich Witte
(1829-1927)

Reserve Sakoku

“Keep clipping those monsters”
(Brabants Dagblad)

“Knotweed: indestructible terror plant”
(Dagblad van het Noorden)

“Eradicate the Japanese knotweed in Enschede, use poison if necessary”
(Algemeen Dagblad)

“Destroy every root and branch!”
(Tubantia)



▲ De Japanse duizendknoop duikt overal op. Hier bij de Wouwervallei onder Gilze op het land van het Waterschap. © Guus van Roozendaal

Wie doodt de agressieve Japanse duizendknoop, de ninja onder de invasieve exoten?

GIIZE EN RIJEN/BREDA - De Japanse duizendknoop is de ninja onder de agressieve planten. Hij is nauwelijks te bestrijden. De wortel beschadigt



or
e

miljoen euro
e plant die op
emen zorgt.



orp

og

\$

woekeronkruid
eem groeit, en

dat is nodig ook... Huizen met een duizendknoop in de tuin, zijn moeilijker te



@norbert_peeters



norbertbotanischfilosoof



botanischefilosofie.nl/



Tekening van Darwins kinderen in een proefdruk van *Origin*

Janny Vos
(CABI)

Jaïke Bijleveld
(Amsterdam Municipality)